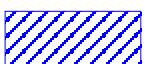
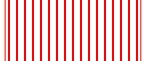




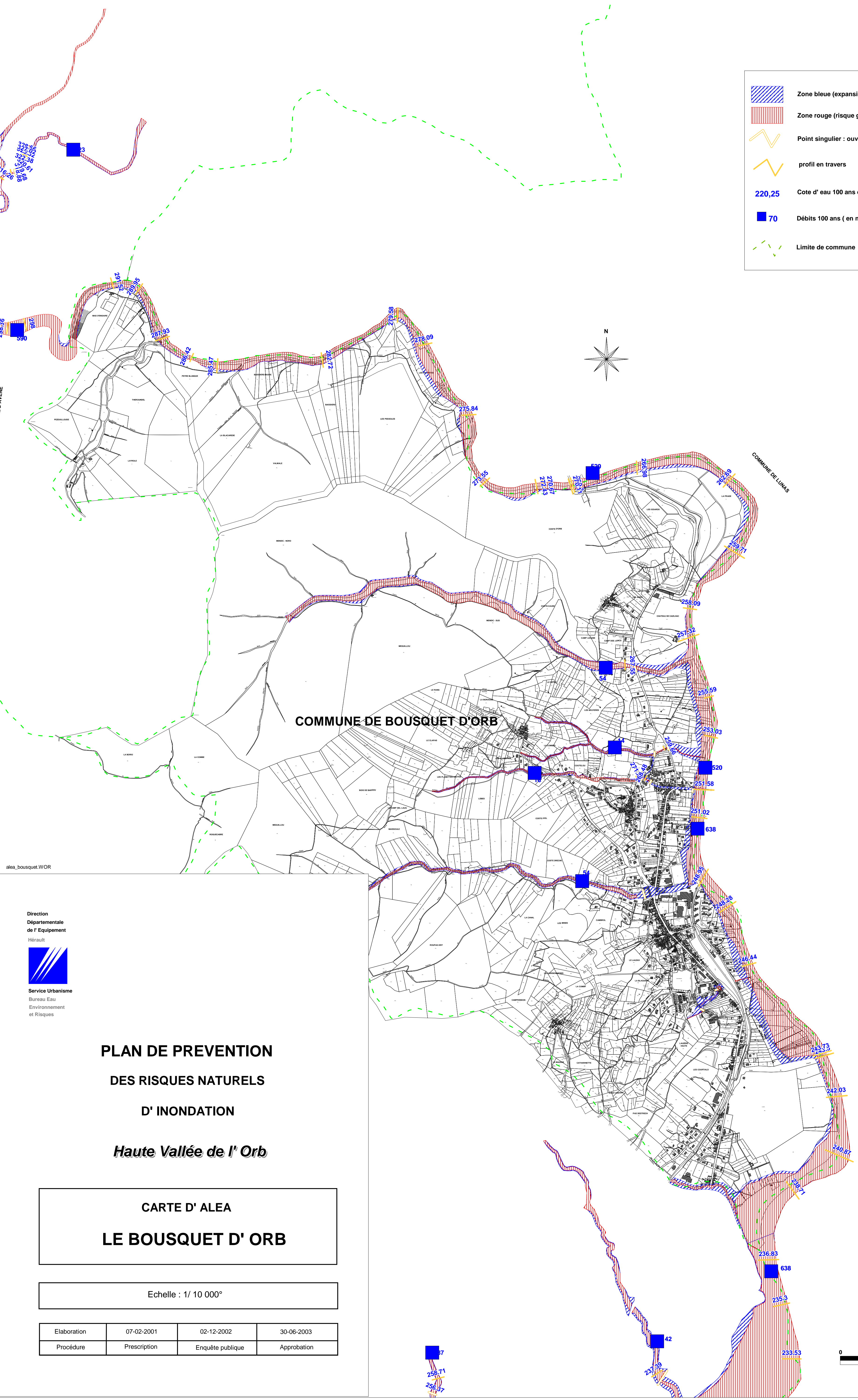



-  Zone bleue (expansion des crues)
-  Zone rouge (risque grave)
-  Point singulier : ouvrage
-  profil en travers
- 220,25** Cote d' eau 100 ans en m NGF ( PHE Calculée )
-  **70** Débits 100 ans ( en m3/s )
-  Limite de commune



AVENUE

alea\_bousquet.WOR

Direction  
Départementale  
de l' Equipement  
Hérault



Service Urbanisme  
Bureau Eau  
Environnement  
et Risques

**PLAN DE PREVENTION  
DES RISQUES NATURELS  
D' INONDATION**  
*Haute Vallée de l' Orb*

**CARTE D' ALEA  
LE BOUSQUET D' ORB**

Echelle : 1/ 10 000°

Elaboration	07-02-2001	02-12-2002	30-06-2003
Procédure	Prescription	Enquête publique	Approbation

